

Figure 1: Cape York Peninsula rainforests showing location of Stanton and Fell sites.

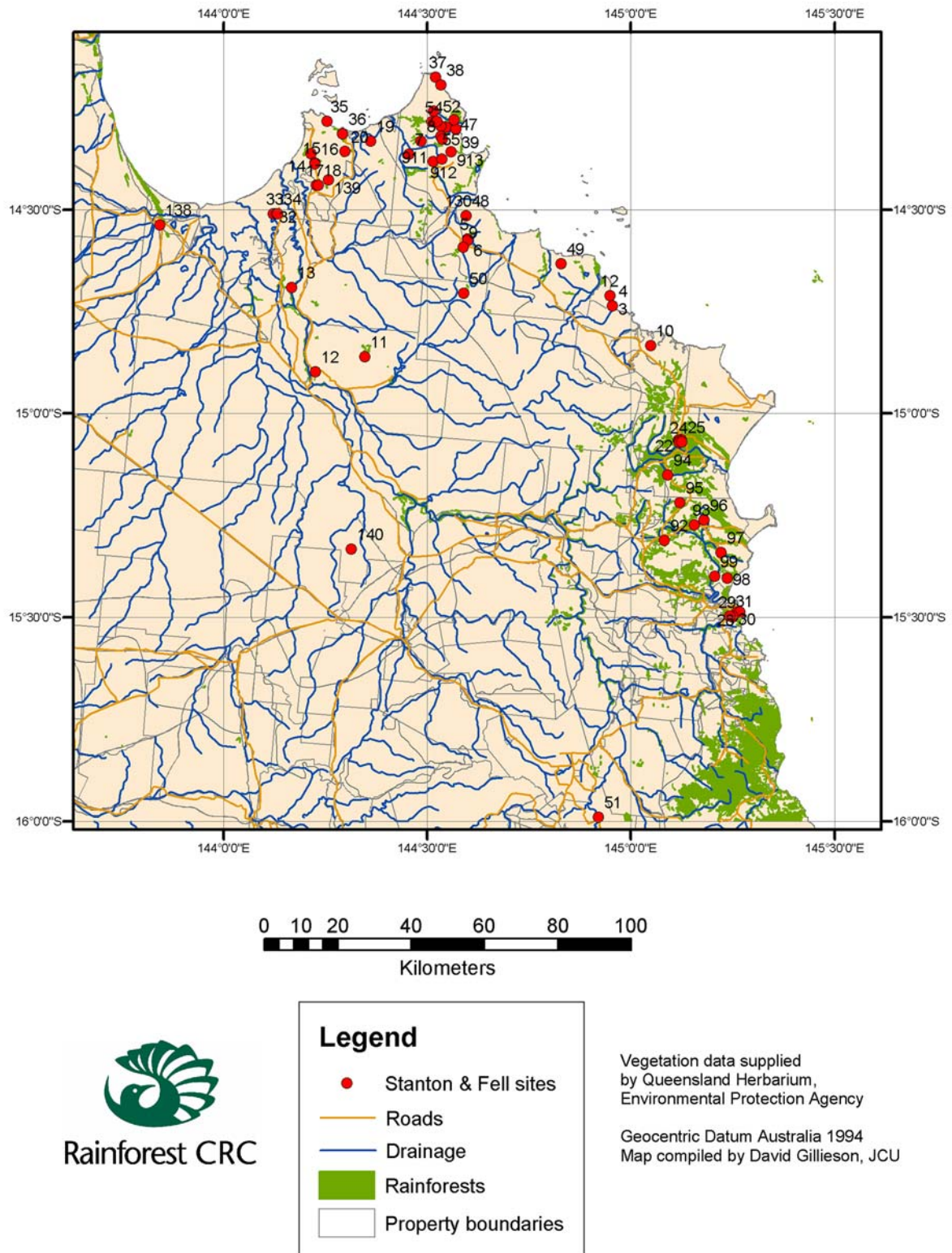


Figure 2: Laura Basin rainforests showing location of Stanton and Fell sites.

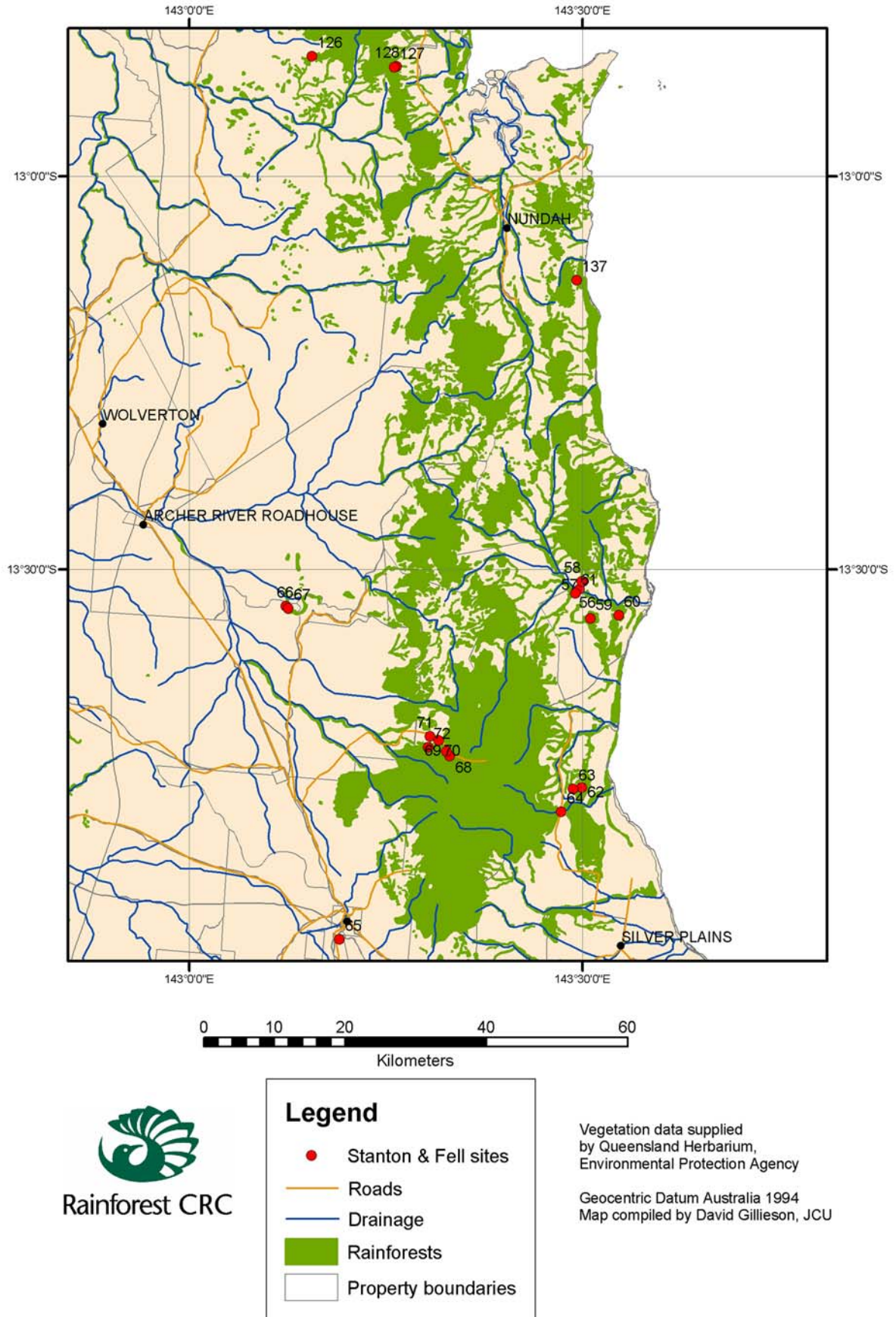
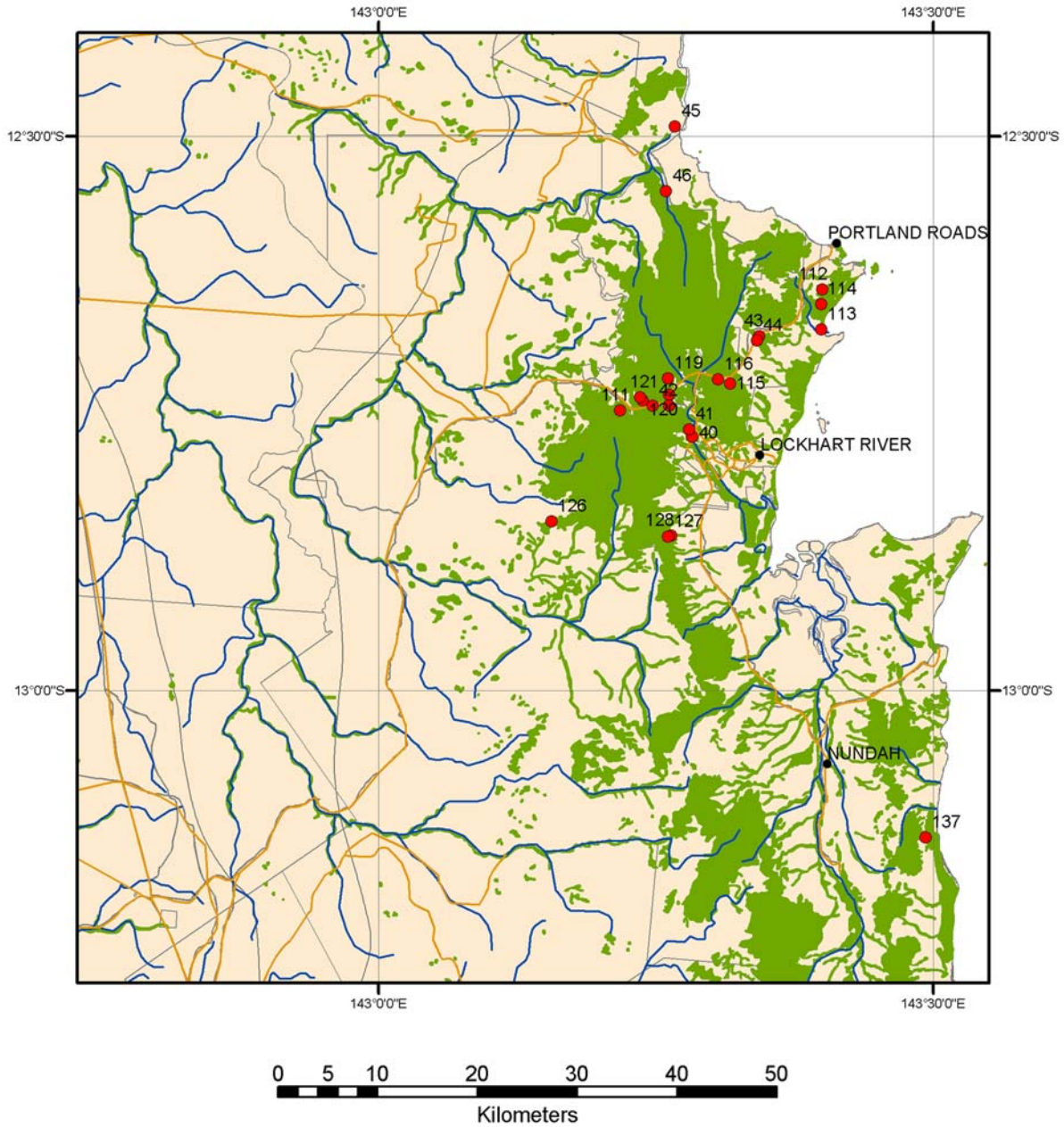


Figure 3: Mcllwraith rainforests showing location of Stanton and Fell sites.



Legend

- Stanton & Fell sites
- Roads
- Drainage
- Rainforests
- Property boundaries

Vegetation data supplied by Queensland Herbarium, Environmental Protection Agency

Geocentric Datum Australia 1994
Map compiled by David Gillieson, JCU

Figure 4: Iron Range and Lockhart River rainforests showing location of Stanton and Fell sites.

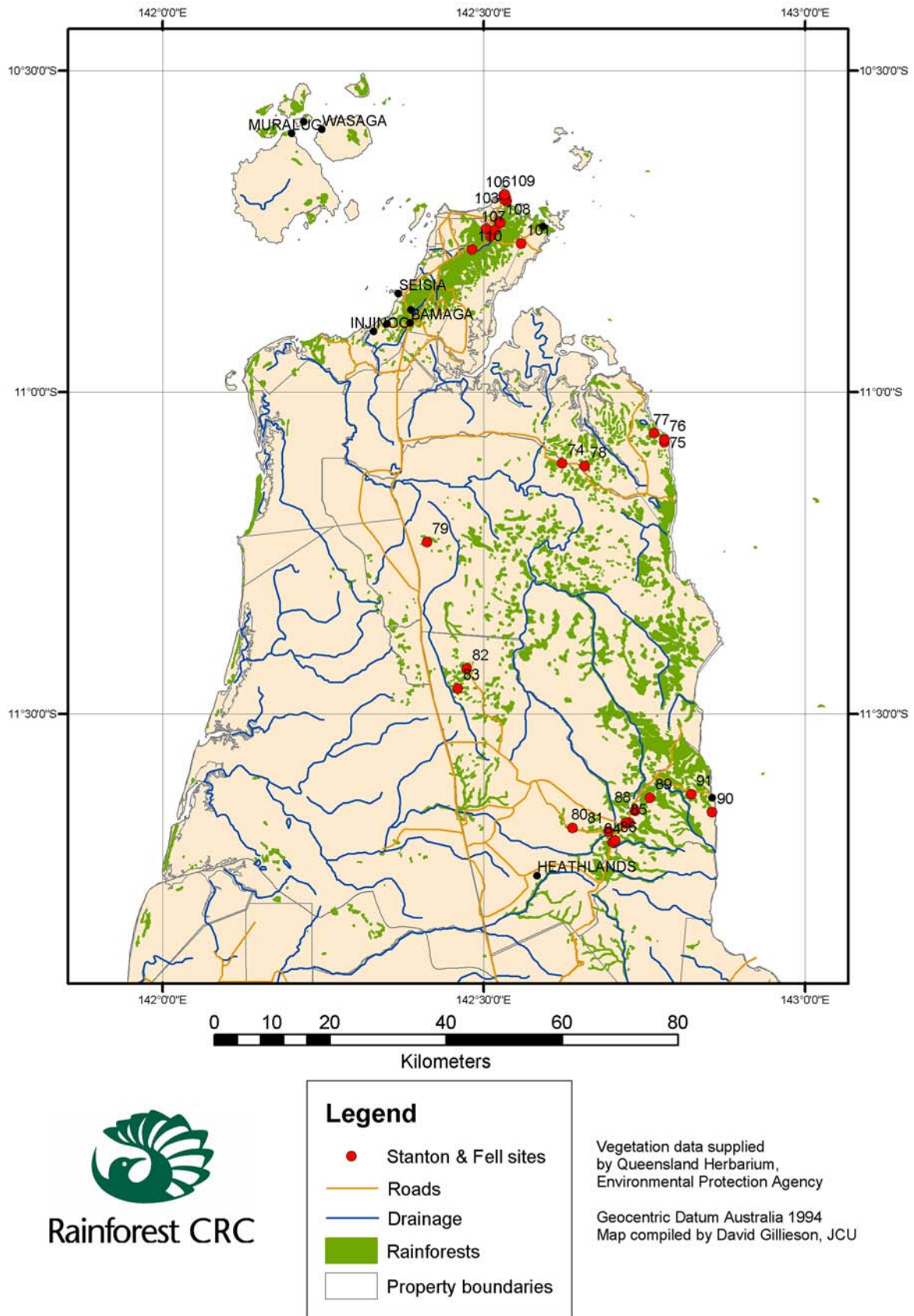


Figure 5: Lockerbie, Bamaga and Jardine rainforests showing location of Stanton and Fell sites.